

Components & Hardware:



Left Leg



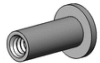
Center Leg



Right Leg



Ledge



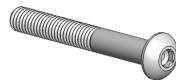
A) Screw post [x2]



C) 5/8" Screw [x2]

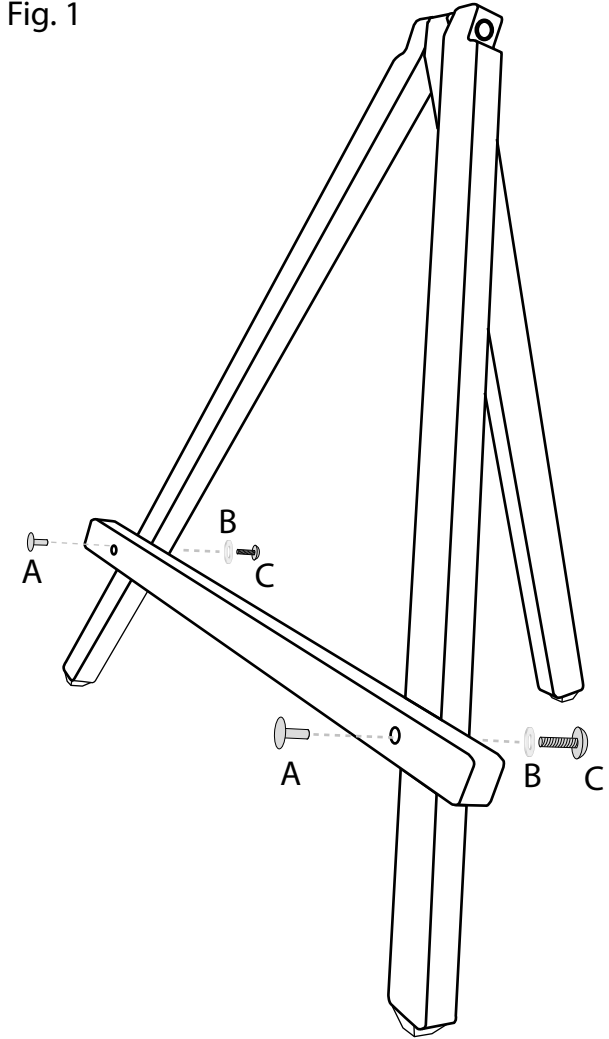


B) Washer [x5]



D) 1-3/4" Screw [x1]

Fig. 1



Instructions:

1. Attach the Ledge piece to the Left and Right Leg pieces using the Screw Posts (A) Washers (B) and the 5/8" Screws (C). See Fig. 1 for visual instructions. Tighten with a phillips screw driver.
2. Attach the Left, Center, and Right Legs using the 1-3/4" Screw (D) and Washers (B). See Fig. 2 for visual instructions. Tighten with a phillips screw driver.
3. Enjoy your table top easel!

Fig. 2

